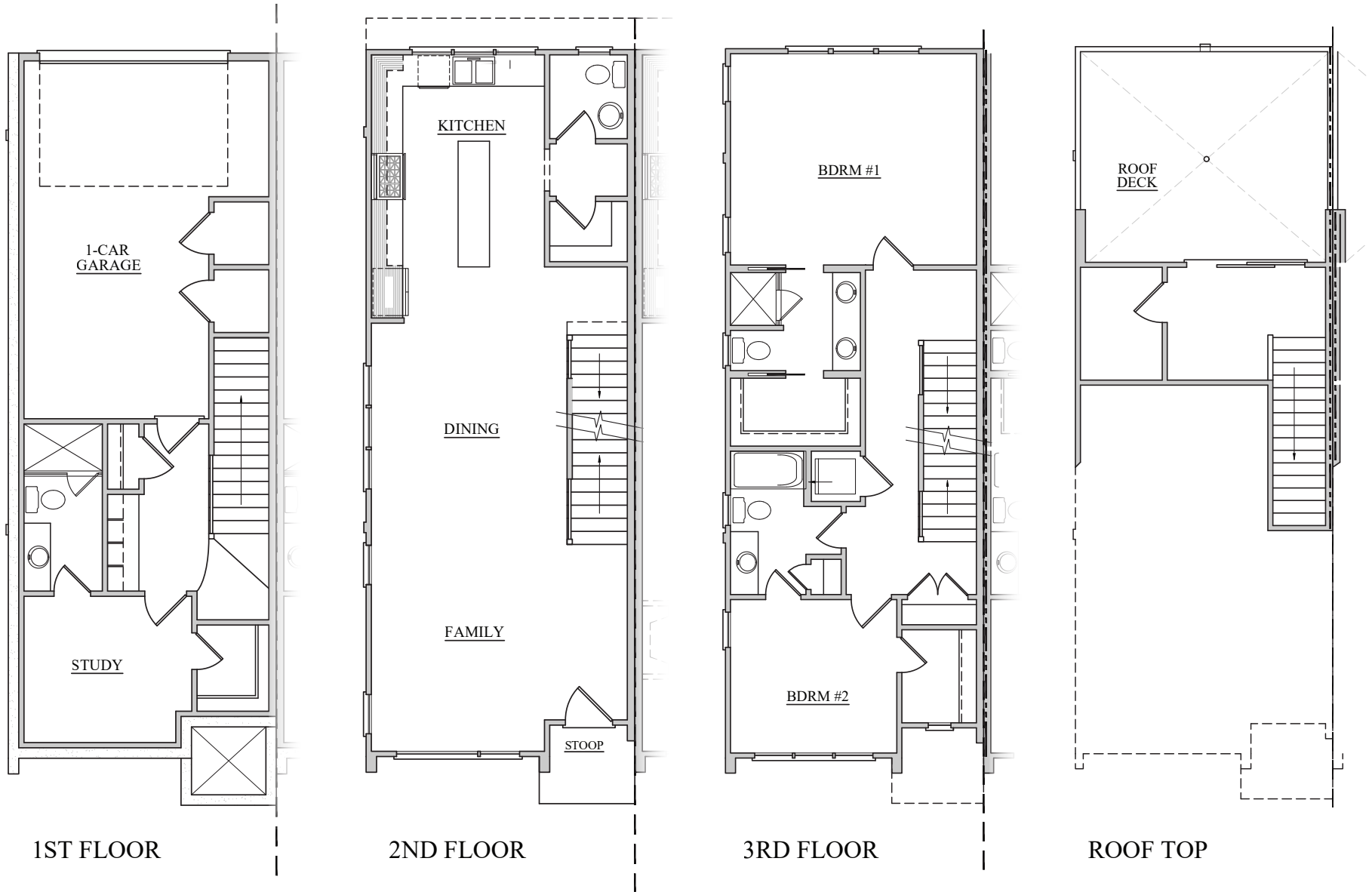


GRANT ROW

Modern Architecture, Timeless Interiors

END UNIT FLOOR PLAN



LEGACY
CUSTOM HOMES

©2026 All images and information provided herein describe and highlight proposed features and amenities of Grant Row. These materials are for marketing purposes only. Features, dimensions, room configurations and finishes identified herein may contain minor variations during construction from what is stated herein. Brands, products and materials with similar superior quality may be substituted by project or material availability if deemed necessary. Furniture layouts shown are for concept only. Equal Housing Opportunity. 3/26



GRANT ROW

Modern Architecture, Timeless Interiors

END UNIT TOWNHOME

Grant Row is a limited collection of 26 modern townhomes designed for refined, low-maintenance living in one of Raleigh's most connected locations. Just off Wade Avenue near the Oberlin intersection, residents enjoy effortless access to dining, shopping, and everyday conveniences in the Village District.

Grant Row blends striking contemporary architecture with warm, high-end interiors that balance clean lines with livable comfort. Designer finishes, premium materials, and carefully curated details create a sophisticated yet welcoming atmosphere throughout each home.

Each residence offers **1,939 heated square feet** of thoughtfully designed space, including **two spacious bedrooms, 3.5 baths**, and a versatile **ground-level flex suite with a full bath**.

For more information, call
919-275-0662

LEGACY
CUSTOM HOMES

legacycustomhomes.com

